



Accu-Sort offers the Quad-X, our highest performance omnidirectional scanner.

The Quad-X provides incomparable performance at an economical price, along with maximum reliability and easy-to-use diagnostics.

The unique optical package of the Quad-X covers up to 36" (91.4 cm) of conveyor with up to 4800 scans per second. Each scan pattern of two Xs can focus as different read zones, virtually doubling your depth of field without additional moving parts.

For maximum reliability and performance, the NEMA 12-rated Quad-X is equipped with four solid state visible laser diodes, each with a thermoelectric cooling chip to extend its life.

Improved A/D circuitry increases depth of field and decodes low-contrast bar codes. For ease of use, there are two serial ports, along with photoeye, tachometer, and relay connections.

Diagnostics determine laser diode and motor status, and check voltages and tachometer functionality. Data and diagnostic messages appear on the 2 line-by-16 character backlit LCD display.

Accu-Sort's patented DRX® (Data Reconstruction) technology and a TachTrac option improve read rates and reduce package spacing to as close as 2" (5.1 cm).

DRX® uses partial scans to reconstruct bar codes with 100 percent accuracy, thus reducing label costs. DRX® enables low aspect ratio decodes to be decoded and improves the read rate on damaged and poorly printed codes.

TachTrac tracks boxes as they pass through the scan pattern, matching codes to the correct box. This option allows close package spacing for optimum throughput and productivity.

Typical applications include:

- Package Handling systems
- Retail/Wholesale Distribution
- Mail Order Distribution
- Airport Baggage Handling
- Tire Scanning

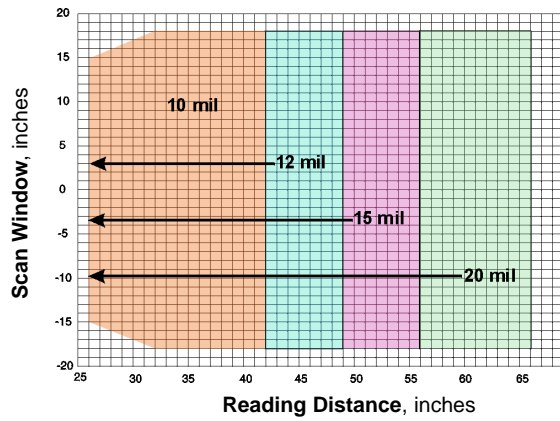
OUTSTANDING BENEFITS

▶ For maximum reliability, the single brushless DC motor/mirror wheel and all optics are in a sealed compartment

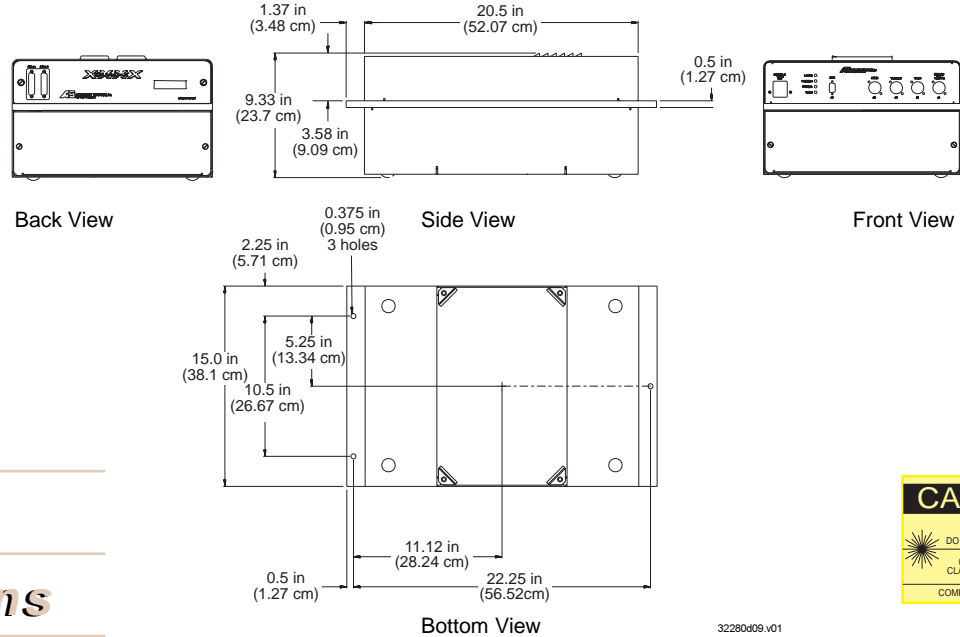
▶ Basic troubleshooting is a breeze with LEDs for power, trigger, tachometer, and read/no read

▶ Lower cost Double-X version designed for applications with smaller depth of field and/or conveyor coverage

▶ Improved read rates with Accu-Sort's patented DRX® technology that reconstructs bar codes from partial scans



Narrow Element Width, mil	Reading Distance	Scan Window
10 (.25mm)	26"-42" (660-1067mm)	36" (914mm)
12 (.30mm)	26"-49" (660-1245mm)	36" (914mm)
15 (.38mm)	26"-56" (660-1422mm)	36" (914mm)
20 (.51mm)	26"-66" (660-1676mm)	36" (914mm)



Product Specifications

Scan Rate:

Up to 600 scans per segment per second
Up to 4800 total scans per second

Depth of Field:

Up to 40" (application and bar code dependent)

Laser Type:

Standard - 670 nm, 10.0 mW solid state visible laser diode with thermo-electric cooling chip
Optional - 635 nm

Visual Diagnostics:

Power, trigger, read/no read, tachometer

Bar Code Types:

Code 39, I2 of 5, Code 128, UPC, and other standard symbologies

Connectors:

Start/end presence photoeye inputs
Tachometer
Two serial ports (host and aux)
Two Relay inputs
Power

Size:

Length - 23.3" (59.0cm)
Width - 15.0" (38.1cm)
Height - 8.8" (22.4cm)

Weight:

48 lb (22 kg)

Temperature Range:

32°-122°F (0°-50°C)

Relative Humidity:

10%-90% non-condensing

Power:

100/115 (230/240)VAC
50/60 Hz
860 mA (startup)

Communications:

Host and aux ports
RS-232
RS-422
RS-485
20 mA (host only)

Enclosure:

NEMA 12 (IP 54) with sealed optical compartment

Options:

TachTrac
Form "C" Relay(s)
Internal heater for temperatures as low as -20°F (-29°C)

Approvals:

CE, UL1950, cUL, FCC Class A
CDRH Class II

Service Options:

Installation assistance
On-site training

Warranty:

1-year limited, parts and labor

Accu-Sort reserves the right to change specifications without notice